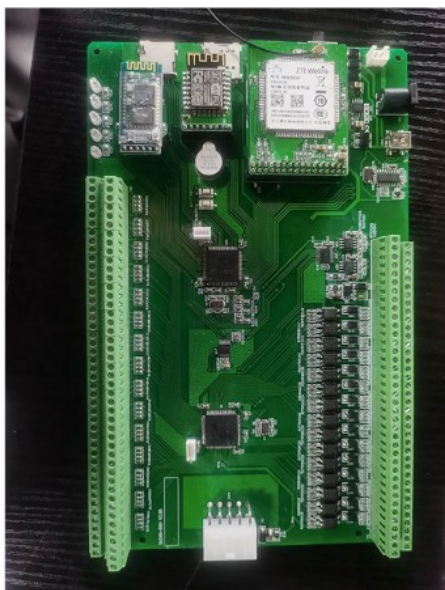


PCBA-07



Product Code: 010000008

Weight: 0.00kg

Dimensions: 0.00cm x 0.00cm x 0.00cm

Description

Technology specifications:

Bluetooth Chipset: Texas Instruments CC2640

Built-in Battery: 4000mAh

Quiescent Current: <4mA

Battery Life: 30 days (Standby)

Operating Temperature: -20°C ~ 60°C

Color: white

Material: ABS + Tempered Glass

Size: 140*80*23 (mm)

Weight: 216 (g)

About us:

We are a professional manufacturer of producing remote control board/PCBA of all kinds of fireplaces and appliances. Based on your product features, we can provide remote control program such as remote/TC/phone app remote control your fireplace.

We have R&D team, we can design hardware control board as well as software device at your requirements.

Quality Policy: -- We have Systematic and ISO certified Quality Control system. We always supply the material on 100% Quality Guaranty.

High quality guarantee. Efficient and competitive quotation. Your satisfaction is our greatest achievement.

